

Integrated College Glengormley

Prospectus 2024



INTEGRATED COLLEGE
GLENGORMLEY

Achieving Excellence
Together

www.integratedcollegeglenormley.com

Mission Statement

High-quality education changes the world, one child at a time.

We prepare our pupils for life in a diverse world by intentionally integrating pupils of all abilities, cultural and socio-economic backgrounds, from all faiths and none.

We provide a caring and inclusive environment to help our pupils achieve excellence within a culture of acceptance and understanding.



Contents

4	Principal's Welcome	19	Parents/Carers Role
5	Awards	20	Additional Needs Department
6	Integration: The way forward	22	Baseline Assessment
7	Our Identity	23	Pastoral Care
8	Our Crest	24	Safeguarding
10	Year 8 Insights	25	Well-Being and Pupil Support
14	A Day in the Life of a Year 8 Pupil	26	Extra Curricular Activities
15	Head Prefects	27	PE Extra Curricular Activities
16	Key Stage 3 Curriculum	28	Duke of Edinburgh Award Scheme
17	Key Stage 4 and 5 Curriculum	30	Uniform
18	Teaching and Learning		



Principal's Welcome

Welcome to Integrated College Glengormley (ICG), a beacon of transformative education and innovation in the heart of our community.

Opened on the 1st of September 2022, ICG proudly stands as the first post-primary school to 'transform' to integrated status for over 14 years. This journey was boosted by the support of our parents, who overwhelmingly voted in favour of fostering an inclusive and diverse learning environment.

Our mission, succinctly captured in the words "High-quality education changes the world, one child at a time," drives every facet of our approach. At ICG, we are dedicated to preparing our students for the complexities of a diverse world, intentionally integrating individuals of all abilities, cultural backgrounds, and faiths, fostering a culture of acceptance and understanding.

We take immense pride in being a school for the entire community, transcending language, religion, and cultural traditions. The overwhelming demand for an integrated education was evident when, in September 2023, ICG experienced the highest demand

for Year 8 school places in over 20 years, and with a Year 8 enrolment of 231 places being taken up, we are over-subscribed.

We understand that choosing a post-primary school is a significant decision, one laden with questions and considerations. Whether it's about the ease of travel for your child in getting to school, your child's happiness, or access to specific GCSE courses, we encourage you to explore our prospectus thoroughly. Should you not find the answers you seek, please reach out—no query is too small. Additionally, we extend a warm invitation to experience ICG first hand through a personalised school tour.

As you delve into this story of our award-winning school, we hope you discern what matters most to us: **relationship** and **the art of teaching**. We firmly believe that a child's journey to achievement is anchored in feeling cared for, understood, and valued. Our staff invest intentional time in cultivating meaningful relationships with both pupils and parents. The art of teaching is the cornerstone of our commitment to academic excellence. We prioritise the quality of teaching through meticulous observation, continuous evaluation, extensive training, and the showcasing of best practices.

In the realm of life-changing education, ICG goes beyond bricks and mortar. It's about the connection and positive relationships between staff and pupils. It's about enthusiastic teachers planning for high-quality education and students actively participating through listening, engagement, and questioning. Moreover, it's about parents partnering with the school to support their child's learning at home.

At Integrated College Glengormley, we offer more than education; we offer a transformative experience. We are ready and eager for you to join us on this exciting journey. **Welcome to ICG—where every child's potential is nurtured, celebrated, and unleashed.**

Richard Massey

BEd (Hons) MSc PQHni CMgr FCMI FCCT

Awards

School of Sanctuary Award

Integrated College Glengormley achieved the prestigious School of Sanctuary status in June 2023, underscoring our unwavering commitment to cultivating a warm and inclusive learning environment for all students, including refugees and asylum seekers. Mr Coey's tireless efforts, supported by dedicated staff and students, were instrumental in securing this accolade. Moving forward, we are enthusiastic about embedding our School of Sanctuary status into the fabric of our school whilst promoting our integrated ethos at ICG.



Blackboard Awards

In February, Natalie Clarke, Carla Dowey, David Jackson, and Sharon Sames were honoured at the annual Blackboard Education Awards. A special commendation goes to Natalie Clarke who was named “Cross Community Champion 2023,” recognising her leadership throughout our transformation journey to becoming an integrated school.

Pearson Awards

At the Pearson Teaching Awards in June 2023, Josh Booth received the “Outstanding New Teacher Award.” Joining our staff in September 2021, initially in the Design Technology Department, Josh's remarkable progress to Head of Year 9 exemplifies his dedication and talent. His achievements stand as a testament to the excellence we cultivate at ICG, and we take great pride in celebrating his success.



Carson Awards

Integrated College Glengormley was selected by the Integrated Education Fund (IEF) to host this year's Carson Awards, a significant honour as the most recent post-primary school to transform to integrated status. Welcoming staff and students from integrated schools across Northern Ireland, our pupils received the Innovation Award, recognising their creativity. We extend our gratitude to Tony Carson for his commitment and generosity in sponsoring pupils within the integrated education sector as part of the Carson Awards, reinforcing our pride in the outstanding achievements of our students.

Integration: The way forward

We opened our doors on 1st September 2022 as Integrated College Glengormley having gone through a transformation process which began in January 2020. We find ourselves at the beginning of a very exciting journey and look forward to intentionally educating pupils together, within an integrated ethos of diversity, inclusion and understanding. Our desire to integrate our pupils will prepare young people for the diverse world that we live within and equip pupils with the knowledge, skills and understanding to make a positive contribution within their communities and beyond.

We strive to provide pupils with learning opportunities within and beyond the classroom to develop a greater understanding of diversity and to have opportunities to learn, explore and experience our integrated ethos.

All staff have benefitted from extensive training, support and guidance from the Education Authority (EA), Integrated Education Fund (IEF) and Northern Ireland Council for Integrated Education (NICIE).

Why did we become an Integrated School?

According to the 2021 census, the Glengormley Ward was recorded as 43.78% (Roman Catholic religion) and 47.89% (Protestant and other Christian religions). Therefore our local catchment area is very mixed. Although all members of our community are welcome to join our school, we strive to meet the needs of our whole community, through intentionally integrating our pupils.

What is Integrated Education?

An Integrated school provides a learning environment where our pupils from Roman Catholic and Protestant backgrounds, as well as those of other faiths and none, are educated together. The promotion of equality and good relations extends to all members of our school community, regardless of an individual's religious, cultural or social background.

What impact does this have upon enrolment?

Integrated College Glengormley currently has an approved enrolment of 1250 pupils, this is the largest approved enrolment in our locality. For the last two years, our Year 8 has been oversubscribed and we expect September 2024 to be the same.



Our Identity

By educating young people together from diverse backgrounds and traditions, we are preparing them for life's rich journey, better equipping them for the world. As part of our exciting transformation journey, a crest and school uniform have been designed especially for this new chapter.

Our new brand identity is designed with the goal of including people from different backgrounds. We focused exclusively on inclusive design practices to create a universally relevant image that truly reflects who we are collectively and as individuals while representing our school's vision and values.



Our Crest



This is what our crest represents



SCALES
For Equality



HEADPIECE
For Togetherness/Success



MODERN FLEUR-DE-LIS
For Embracing Others



FLORAL SUPPORTERS
For Hope and Joy



Reception

All visitors must sign-in at reception



Hamilton Building
Templeton Building

Achieving Excellence Together

Year 8 Insights



When I started Integrated College Glengormley, I was scared and didn't know anyone. After a couple of days I felt safe and happy because of all of the friends I made. ICG made me feel extremely welcome because of

the amazing pupils and supportive staff. My favourite subjects are Biology, English and PE. ICG offers many different clubs and I would recommend this school for everyone.

Weronika Lata
St Joseph's Primary School



When I first came to ICG, I was really nervous, but I soon got settled in and quickly made good friends. The teachers are very nice and ICG has lots of after-school activities such as cookery club and hockey. I would definitely

recommend ICG to all P7 pupils.

Yara Moustafa
Mallusk Integrated Primary School



I was a bit nervous on my first day but I got to know where everything was quickly. I made friends easily and all of the teachers are very nice. My favourite subject is ICT because I love using computers. ICG is a school that is appropriate for pupils of any religion.

Jay Stephens
Cavehill Primary School



My time in ICG so far has been good. At first I felt anxious yet I feel much happier now I have made a couple of friends.

Carter Mitchell
Glenwood Primary School



I really like this school. When I first came here, I thought I wasn't going to make friends but it has been the opposite. My favourite subjects are Art, PE and HE. The Year 8 and 9 pupils have a ginormous playground.

Kyle Kirkham
Whitehouse Primary School



When I came to ICG I felt really nervous. My form tutor was really welcoming and I have learnt that moving around the school is a lot easier than I thought. My favourite subject is HE as I love to bake and cook. I also attend the after school cookery club and it is lots of fun.

Isaac Bryant
Ashgrove Primary School



When I started ICG I was nervous and thought it would be difficult but it's actually the opposite. The staff are really nice as well as the pupils. Since my move here, I have made plenty of friends. I have always been a big fan of History and I am really enjoying English also. ICG will give any new pupils great opportunities and I think it would be good for you.

Jack Morrow
Earlview Primary School



When I came to ICG I felt scared about moving around the school but after a few days this became easier, compared to the first day. I have settled in well and I have met loads of friends and have joined a range of clubs like football, rugby, science shack and the choir.

Kaitlin May
Kings Park Primary School



When I first came to ICG, I was actually very excited about the change, but I was also feeling nervous. I was worried that I wouldn't find my way around the school, but I soon learnt where to go. ICG has something for

everyone - there are lots of clubs to choose from. I go to athletics, hockey and netball after school. My favourite subjects are Art, English and Spanish. I have made lots of new friends and all of the teachers are so kind and welcoming. To all of the P7s, I know that you will love the school as much as I do.

Lilia Cromie
Ballyhenry Primary School



I was nervous for the first day, I got lost a couple of times, but after a week I knew my way around the school. My favourite subject is PE. I love PE because I am very sporty, my favourite sports are badminton, football and rugby. I have joined the school football team.

Jake Tyndall
Carnmoney Primary School



When it was my first day of school, I was really nervous and I thought that I would get lost, but I was wrong. The teachers are really welcoming and it turned out that it was really easy to find classes. My favourite subjects are Art, Music

and Technology and Design. Lastly, there are lots of fun clubs to join at lunch time and after school.

Anamaria Petricia
Seaview Primary School



When I first came to ICG I was really nervous but my Form Tutor really helped me to settle and I made lots of friends.

Shian Mustafa
Holy Rosary Primary School



On my first day I was scared that I wouldn't have any friends but I opened up to people and now I have so many friends. I used to hate making things, but HE and Technology and Design have helped me find new passions. I think this school is special and I love it here.

Alex Kerr
Abbots Cross Primary School



When I first came to ICG, I was a little nervous but also very excited. The first day following my timetable felt weird as I went to different classes. After a week it was great because I had so many friends and I knew my way around. I go to gaelic and hockey

clubs after school and I would like to join the school band. My favourite subject is Technology and Design because I love building and designing projects and completing the design homeworks. I love ICG and can't wait to see where it will take me.

Isaac Woodward
Mossley Primary School



When I first joined, I met my Form Tutor who is really nice. I got lost on the first couple of days but it does get easier. The teachers are really kind and the school is very good.

Ruby Graham
Glengormley Integrated Primary School



When I first came to ICG I was feeling nervous and scared of getting lost. I very quickly made friends with people and my favourite subject is PE because it is just like PE in primary school but more competitive.

Lewis Tovey
Mossgrove Primary School



I really enjoy the practical lessons such as Art, ICT, Science, Music, Technology and Design. I really felt nervous when I first started in ICG but I have really settled into big school.

Kiera Moore
Hollybank Primary School



When I first started I felt so excited and I really wanted to see how the school looked inside. I enjoy practical subjects in ICG such as Home Economics and conducting experiments in Science. My favourite things about ICG are my friends and my teachers.

Maksymilian Plinski
Our Lady of Lourdes Primary School



On my first day, I felt nervous because I didn't know anyone but I quickly made good friends. I really enjoy PE because I am a very active person. The teachers in ICG are very kind.

Zach McCord
Pond Park Primary School



When I was coming to ICG, I felt nervous about seeing different teachers and a lot of different people, but it was okay. The teachers and pupils are really nice. If you are worried about making friends, you could try to do some clubs. For example, I thought I would not have as many friends as I had at my old school, but joining lunchtime and afterschool clubs helped. There are a lot of clubs to choose from. I attend the culture and diversity after school club, and nail art at lunchtime. This has really boosted my social awareness and made me feel like a valuable member of our school.

Deborah Olude
Lowwood Primary School



I was scared on my first day at ICG because I thought I wasn't going to make friends, but I have made a lot. My favourite subject is Technology and Design because I like the teachers and the work I do. For anyone coming to ICG, I would say don't be scared about not making friends, as there will always be someone looking out for you.

Louella McAleese
Parkhall Primary School



I was excited on my first day. I settled very quickly and have an amazing Form Tutor. My favourite subject is PE as I am very sporty. Every Tuesday, I attend rugby club after school and we have a match every month.

Charlie McGuigan
St Mary's on the Hill Primary School



On my first day I was really nervous. I settled really quickly as I have a lovely Form Tutor who answered lots of my questions. I play for the ICG football team and train once a week. I love Geography and History. My teachers are very welcoming and encouraging.

Finn Trainor
Hazelwood Integrated Primary School



I was scared and stressed on my first day of school. However, I gained confidence as I made a good group of friends really quickly. I like Geography, Science and Art. My teachers are all very supportive and willing to help me if I have any questions.

Bianka Olender
Nettlefield Primary School



My experience here at ICG has been extraordinary. I was a little nervous to begin with but once I started in this school my nerves disappeared. I don't think I could be happier.

Amber Adams
Carr's Glenn Primary School



A Day in the Life of a Year 8 Pupil



Isabella Gilliland

Mossley
Primary School

My school day starts when my parents drop me off around 8.30am and I look forward to catching up with my friends. Then I go to my form class and my form tutor announces any important information.

Once registration ends at 9.05am, I go to my period 1 class. When everyone arrives, we all line up and wait for our teacher to meet and greet us before we go into our class. Once period 2 is over, I head out to the Year 8 playground to eat break and spend time with my friends. We usually talk about our previous lessons.

After break, we attend period 3 and 4 classes. At 12.40pm, I go to the Year 8 canteen for hot food but some pupils eat packed lunch. Lunch is longer than break, everyone gets to spend more time with their friends. Once the 1.25pm bell rings, I go back to my form class for afternoon registration.

After period 6, I either go home or attend an extra-curricular activity. I love going to clubs, especially Hockey Club and Science Shack. I love the silly experiments in the lab. As well as Science and Hockey, I love Netball and Running. Once my school day is over, I go home and tell my family all about it!



Daniel Cairns

Greenisland
Primary School

In the morning my Mum drops me in at school around 8:35am and I go to my form class or on Monday's I go to Year 8 assembly. In form class, my form tutor goes through the announcements and then I go to period 1 when the bell rings. At the end of period 2, my friends and I visit the canteen for a quick bite to eat before period 3 begins and I then go to my period 4 lesson.

In Year 8, all pupils go to lunch 10 minutes before the rest of the pupils, which is great. I love going to the canteen at lunch to choose from the lovely food and because lunch is much longer, I can spend more time with my friends and then I go and play basketball in the Year 8 playground each day. After lunch, we see our Form Tutor again for 10 minutes for afternoon registration before going to period 5 and 6.

Each Monday and Friday, school finishes early at 2:35pm and school finishes at 3:30pm every other day. I enjoy going to after-school clubs. Each day I leave school and get a bus home, I am so tired after all of the hard work!

Head Prefects



Molly McCrum

In July 2017, coming to terms with getting ready to start 'big school' was an uneasy thought. I knew that this transition would be thrilling and exciting, but I could not calm the scary feelings about meeting other pupils, interacting with different teachers and finding my

way around a larger school. However, the school immediately provided support to me on the first day of my attendance. The teachers always helped in answering any questions I had, whether they were considered silly or not, directing me if I was lost and talking me through any problems I encountered.

Throughout these past seven years, I was able to work to achieve the best grades of my ability as a result of the support and encouragement from all of my teachers. The teachers always go out of their way to ensure that lessons are understandable as well as challenging me to achieve the best that I can. My time at Glengormley High School and Integrated College Glengormley has provided opportunities for me to grow as a person through exposure to a range of activities and it has undoubtedly helped me form solid friendships that have been maintained since Year 8, all of which fuelled my desire to apply for the Head Prefect role and I feel honoured in my appointment of this prestigious leadership role.

As a Head Prefect I have gained the opportunity to apply my learning and experiences in many ways within school, and hone my skills and qualities within the school environment, which will aid me in the next stage of my life. As a Head Prefect I have attended staff meetings, organised activities for the students, led improvement within the school environment and most importantly, interacted with pupils within Key Stage 3 and 4. Upon completion of my A-Levels, I hope to attend university with the hope of pursuing a career within the medical field. Through the ongoing support and encouragement of my teachers, I can confidently say that I am brave enough to take that leap to pursue my dream. I would not have been able to learn, grow or improve as much as I have without attending this school, and I will leave with wonderful memories of Integrated College Glengormley.



Katie Hagan

Thinking back to when I joined this school, I remember being so scared of the new challenges and the new environment I found myself in. When I first walked into school in Year 8 I was nervous of the unknown, but now when I walk into school, I feel safe and comfortable no matter my religion or cultural background.

In my opinion, integration was the best step this school could have taken and will help prepare pupils in our school for the diversity in their communities and future places of work. ICG has offered me so many opportunities including obtaining my Duke of Edinburgh Award and becoming an Anti-bullying Ambassador. Through the school I have taken part in the Queen's University Junior Academy and the Queen's University Pathway Programme, both of which have equipped me for university life and have inspired me to work hard to earn a place at Queen's University. Within ICG I have gained the opportunity to speak publicly and to even compete in a Soroptimist speaking competition.

Through the Rotary Club, I participated in a leadership competition which inspired me to use my voice and increase my confidence and independence. The staff within ICG have encouraged and supported me in every step of the way of my academic journey. Throughout my years in ICG, I have been a member of the school hockey and school netball teams and through these team sports, I have gained so many friends and memories. During my GCSEs and AS levels, the teaching staff provided me with many revision and study opportunities beyond my timetabled classes, which I am so thankful for as I passed my exams with flying colours!

My recent appointment to Head Prefect makes me extremely proud, and I am excited about the possible opportunities for the rest of the academic year. I am so happy I chose this school as it has helped shape who I am today - a stronger, more determined, inclusive young person, in comparison to the nervous Year 8 pupil I started out as.

Key Stage 3 Curriculum

At Key Stage 3, pupils study an exciting range of subjects based upon the Northern Ireland curriculum. Our curriculum equips pupils with the skills, knowledge and understanding across a wide range of subjects, in preparation for study at Key Stage 4.

- Art and Design
- Biology
- Chemistry
- Employability
- English
- Geography
- Home Economics
- History
- ICT
- Music
- Physical Education
- Physics
- Mathematics
- Religious Studies
- Spanish
- Technology & Design



Key Stage 4 and 5 Curriculum

At Key Stage 4 and 5 we offer an excellent range of engaging subjects and we provide a range of curricular pathways and options, tailored to meet the individual needs of our pupils, whilst allowing each pupil to reach their full potential.



Core Subjects

- English Language
- Mathematics
- Personal Success and Well-Being
- Vocational Skills
- Religious Studies
- Physical Education

Optional Subjects

- Art and Design
- Business
- Biology
- Business and Communication Systems
- Child Development
- Chemistry
- Digital Technology
- English Literature
- Further Mathematics
- Geography
- History
- Home Economics
- Hospitality
- Health and Social Care
- IT Users
- Moving Image Arts

- Personal Development and Employability Skills (Prince's Trust)
- Physical Education
- Physics
- Public Services
- Science
- Spanish
- Statistics
- Music
- Media Studies
- Single Award Science
- Double Award Science
- Travel and Tourism

Occupational Studies

- Care in the Community
- Childcare
- Construction
- Graphic and Web Design
- Horticulture
- Hospitality
- Nails and Beauty
- Office Work
- Sports Leadership
- Technology and Design

Sixth Form

- A-Level Art and Design
- A-Level English Literature
- A-Level Health and Social Care
- Life and Health Science
- A-Level Product Design
- A-Level Biology
- A-Level Chemistry
- A-Level Physics
- A-Level Geography
- A-Level History
- A-Level Maths
- A-Level Moving Image Art
- A-Level Performing Arts
- A-Level Religious Studies
- A-Level Sociology
- BTEC Sport Level 3 Extended certificate
- BTEC IT
- BTEC Public Services
- BTEC Business
- BTEC Media Studies
- BTEC Travel and Tourism
- BTEC Hospitality

Teaching and Learning

The central aim for teaching and learning at Integrated College Glengormley is to ensure that the pupils are provided with high quality learning experiences, which lead to a consistently high level of pupil achievement, in both academic terms and in the development of moral, physical and cultural awareness.

A further aim is to encompass the whole of what pupils do, what teachers do, how time is managed, the organisation of the classroom and what the school does to create an effective and well managed learning environment in which the individual needs of each student can be met.

Finally, the standard of teaching and learning will aim to value diversity and to actively ensure inclusion.



Professional Development in Teaching and Learning

Integrated College Glengormley has a professional development programme available to all staff. It is an investment in our valued staff as leaders of learning, in the enrichment of our students and in the very fabric of our school. This investment is what brings about the raised standards in all that we do. Professional development of staff is supported in a variety of ways in school: internal and external training, coaching, modelling and independent learning. The programme for development ensures that all teaching staff are as fresh and current as they can be, to adapt for all abilities and needs of all students.

Our teaching staff are currently participating in the training of Rosenshine's Principles, which is the cognitive ability to store and retrieve knowledge and information. In addition, a high proportion of staff are working alongside the Education Authority on a programme called The Magenta Principles, which provides students with the skills to explore and analyse in a less prescribed approach to assist with the retrieval process of their learning. Staff at ICG were also the first in Northern Ireland to upskill on the Malit: Teaching Backwards programme, which enhances the ability to promote more independent learners and to 'make learning stick'.

Parents/ Carers Role

Parents/carers also play an active role in our pupils learning as they assist the teaching staff by:

- Ensuring that their child comes to school feeling confident and positive.
- Ensuring that their child arrives at school punctually and regularly.
- Sharing with the teacher any issues that their child is experiencing.
- Supporting the school's homework policy (available online).

Community Role

The community is also invited to support teaching and learning at ICG by:

- Contributing to activities, such as assemblies, artistic events, specialist outings, and clubs.
- Presenting themselves as positive role models to be emulated.
- Supporting school events.



Additional Needs Department

Our Additional Needs Department is led by Mrs Kerr who is a Senior Leader within Integrated College Glengormley. Mrs Kerr is an award winning, highly qualified and devoted leader who seeks to ensure that the learning experience for all pupils with additional needs is inclusive and that barriers to learning are minimised as much as possible. She is supported by two Assistant SENCOs, Mrs Kennedy (Autism focus) and Mr Gault (Medical focus).

The school welcomes pupils from all backgrounds and of all abilities. We recognise that at various stages in a child's education they may need additional support and teaching staff, through 'high quality first teaching', scaffold and differentiate work to cater for the way each individual pupil learns.

Some pupils may require a higher level of specific support and need a Personal Learning Plan that details the additional support they require to help them access the curriculum. Some examples of specific support can include; work being presented in a given format to help with dyslexia, notes being printed for pupils, ICT being made available, extra time in tests and assessments, calm plans and small group or individual interventions. The principle that guides us is always to put the individual needs of the young person at the centre of all that we do, and always to involve the young person in the decision-making process.

We want all pupils to make continual progress regardless of their learning needs during their time at Integrated College Glengormley.

Along with a large team of highly experienced Teaching Assistants, we offer the following learning support provision:

- Break and lunch clubs for vulnerable pupils
- 6th Form Learning Mentors through an enrichment programme
- Trained readers and scribes for KS3 & KS4 exams
- Dyslexia friendly classrooms
- School Based Care Team
- 2 fully equipped Recharge (Sensory) rooms
- Individual and group intervention support programmes tailored to different areas of need
- Advice and guidance and individual pupil support from external EA support services;
- Youth Service
- Literacy Service
- Sensory Service
- Autism Advisory and Intervention Service
- Behaviour Support Service
- Educational Psychology



There are also four mainstream connect classes. These classes follow the full mainstream curriculum but are taught in a smaller base class setting with specialist SEN teachers for academic subjects. Our nurture teachers are Mr Black, Mrs Longwell, Mr Crawte and Mr Donnelly.

We also have two Autism specific specialist classes that are led by Mrs Kennedy and Mrs Woodward - based in a newly refurbished Learning Support Centre. These are specific provisions funded by the Education Authority that cater for a small number of pupils with specific, complex needs. Pupils are recommended for placement in these provisions by the EA based on their individual profile of need.

The provisions follow a bespoke timetable and integrate into mainstream classes when appropriate. Mrs Kennedy co-ordinates the Key Stage 4 class and Mrs Woodward co-ordinates the Key Stage 3 class.

We are also the only post primary school in Northern Ireland to host a specialist Hearing Support Centre, led by Miss Matbouli. This is also funded by the EA and caters for a small number of pupils with moderate and profound hearing loss. Our deaf pupils really benefit from this specialist support but love being part of mainstream education.



Baseline Assessment

Year 8 students will complete the Progress Test in English (PTE) and the Progress in Test in Maths (PTM) on their induction days in August/September. These results are used to place each student in the class most suited to their ability.

CAT4 assessments will be completed during the first term. Along with the PTE and PTM, we use this data to identify underachievement and plan for intervention.

Tracking and Assessment

Key Stage 3 pupils are assessed at four key points throughout the year:

Autumn (October)

Attitudinal tracking in all subjects and assessments in English, Maths and Science

Winter (December)

All subjects assessed

Spring (March)

All subjects assessed

Summer (June)

End of year exams

Year 8 Parents/Carers are invited to attend an initial parent consultation with their child's form tutor in the autumn term and a further consultation with subject teachers in the spring term.



Pastoral Care

In Integrated College Glengormley, we foster a warm, inclusive and supportive environment for all of our pupils. We are relentless in celebrating, supporting and encouraging each of our pupils in their learning. Positive relationships between our pupils and staff are paramount and pastorally we are committed to providing every opportunity to strengthen relationships to ensure our pupils feel respected and valued.

Each form class is led by a caring Form Tutor who meets the pupils every morning and afternoon during registration. The role of the Form Tutor is to care for each pupil's pastoral needs including attendance, punctuality, behaviour and academic progress. The Form Tutor is the first point of contact between home and school. Each Form Tutor is supported by two Heads of Year and a Senior Leader.

We favour a holistic approach to our pastoral care and we have designed a pastoral programme to develop the whole child.

This is delivered through weekly assemblies, our daily Reg Refresh programme and through workshops facilitated by the pastoral team and outside agencies. Each pupil will undertake a programme of study in Personal Development, Citizenship and Employability.

Integrated College Glengormley is proud of our Pivotal Behaviour School status. We received this award in recognition of the positive approaches in managing behaviour. Our school rules are very simple and are based upon the Integrated College Way - Be Ready, Be Respectful and Be Safe. Our staff commit on a weekly basis to engage with parents/guardian's as part of our Positive Friday approach to celebrate the achievements of pupils and to congratulate pupils who have gone above and beyond. This further demonstrates the value and significance we place upon positive and effective relationships within our school community.



Safeguarding

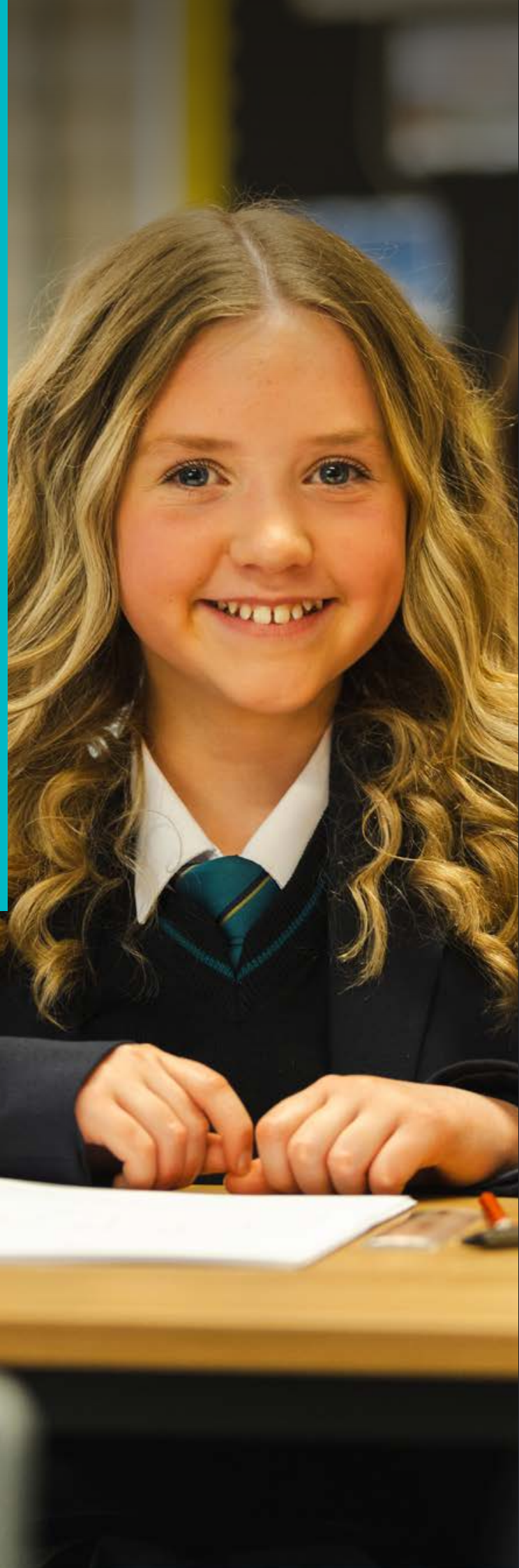
At Integrated College Glengormley we make every effort to ensure that our pupils are protected and are kept safe from harm.

We do this by:

- Giving parents/carers, pupils and staff information about what we do and what they can expect from us
- Making sure that our staff and personnel from outside agencies are carefully selected, trained and supervised
- Informing pupils and parents/carers about how to voice their concerns or report if there is anything that concerns them
- A dedicated safeguarding team of teachers for child protection

The welfare of every pupil in our school is of the utmost importance to us.

Safeguarding and Child Protection is a whole school responsibility and we have a highly experienced Safeguarding team. Mrs Dodds is the Designated Child Protection Teacher and Mrs Clarke is our Deputy Designated Teacher.



Well-Being and Pupil Support

Within our school community, we prioritise pupil and staff well-being and understand that until barriers to learning are removed, effective learning will not take place. We have invested significant resources into staff development, supporting staff with the implementation of the Take 5 well-being model. This is a Public Health Agency endorsed approach to promoting mental health and well-being. As a Take 5 school we seek to promote mental health, social health and emotional health. The Take 5 model is based upon five key areas: Connect, Keep Learning, Be Active, Take Notice and Give.

Our Wellness Wednesday focus within our weekly pastoral programme allows staff to promote key messages regarding mental health, open up discussions and negate stigma which is often associated with mental health issues. Furthermore, by visiting emotional health and well-being on a weekly basis, it allows us to embed the five key areas into our whole school ethos.

We also recognise that pupils may experience difficulty and require additional support for a vast range of issues. Parents/ Carers and pupils can request a referral to the supports listed below via their Form Tutor, Head of Year or Designated Teacher or Deputy Designated Teacher.

EA Mentoring: A locally based EA youth worker facilitates group sessions on a weekly basis.

EA Counselling: An EA qualified counsellor facilitates individual counselling sessions on a weekly basis.

Family Works Counselling: Within School we additionally employ a fully qualified counsellor who facilitates individual counselling.

Furthermore, we work in close partnership with a range of external agencies and utilise their support to best meet the needs of our students within a caring and empathetic environment, including:

- **Action Mental Health**
- **Alternatives**
- **Barnardos**
- **Aware**
- **Ascert**
- **Start 360**
- **Made for More**
- **Reach**
- **EA Youth Worker**

We are delighted as a school to receive a number of awards in recognition of our work to support our pupils including the Onus Safe School Award, the School of Sanctuary Award and Take 5 Level 1 Award.

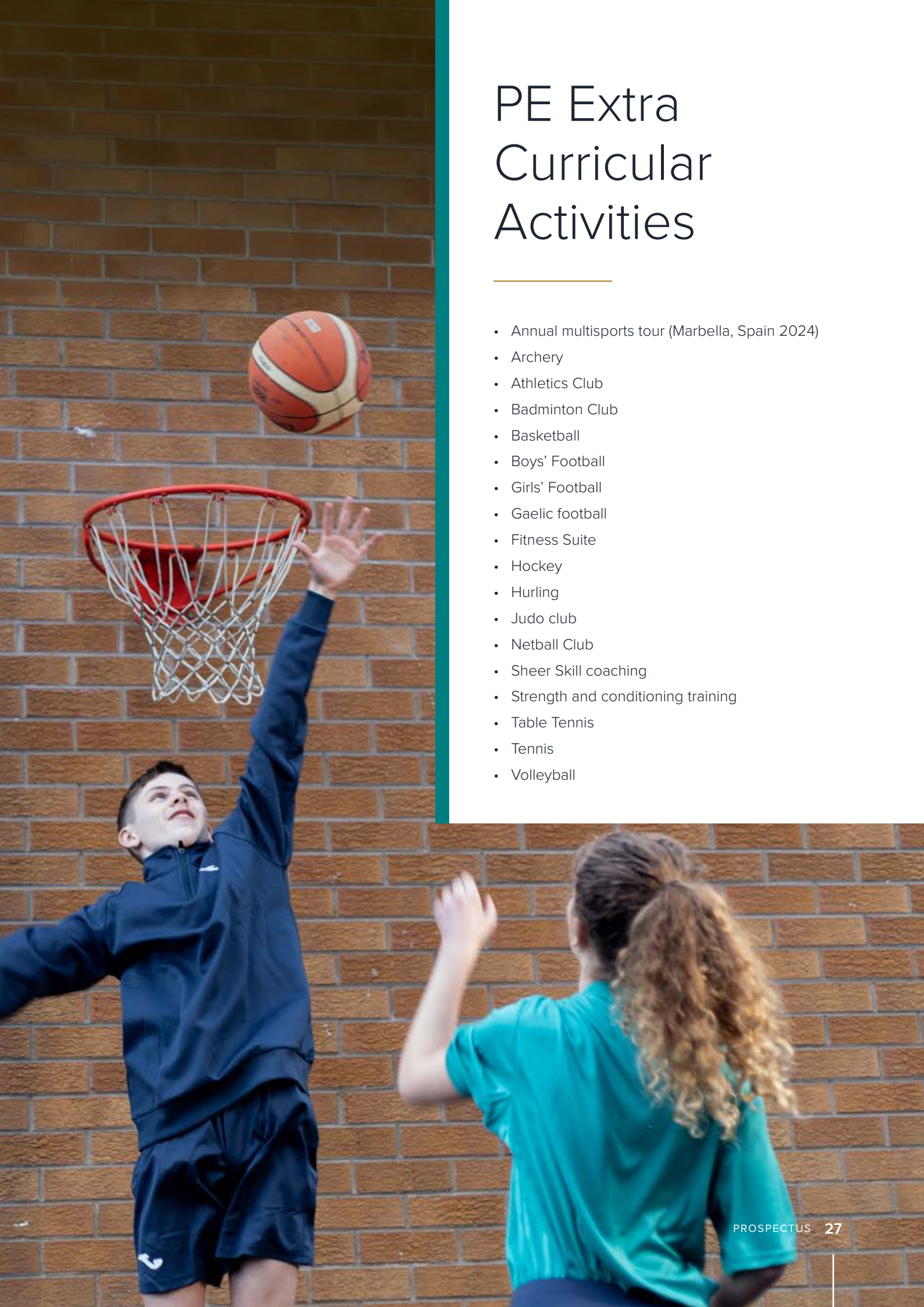


Extra Curricular Activities



- Art Club
- Board Games Club
- BBC Young Reporters Club
- Book Club
- Breakfast Club
- Business Booster
- Careers Club
- Colouring Club
- Comic Book and Anime Club
- Cookery Club
- Computer Club
- Creative Writing
- Crochet Club
- Debate Club
- Design Ventura Club
- Drama Club
- Drone Club
- DVD Club
- Duke of Edinburgh Club
- Eco Club
- Geog Your Memory
- Green Fingers Club
- Film Club
- Homework Breaktime Club
- ICT Club
- Junior Choir
- Library Club
- Lego club
- Maths Homework Club
- Maths Superstars
- Nail Art Club
- Period Dignity
- Safe Space
- School Band
- Science Shack
- Senior Choir
- SU Adrenaline Club
- Ukulele Club
- VR Club
- Walking club
- Warhammer Club
- Wildlife Club





PE Extra Curricular Activities

- Annual multisports tour (Marbella, Spain 2024)
- Archery
- Athletics Club
- Badminton Club
- Basketball
- Boys' Football
- Girls' Football
- Gaelic football
- Fitness Suite
- Hockey
- Hurling
- Judo club
- Netball Club
- Sheer Skill coaching
- Strength and conditioning training
- Table Tennis
- Tennis
- Volleyball

Duke of Edinburgh Award Scheme

Integrated College Glengormley is a registered Duke of Edinburgh Award Scheme centre within the Education Authority and through the Joint Award Initiative delivers both the Duke of Edinburgh's and the President's Award Schemes.

All pupils from Year 10 onwards have the opportunity to enrol in either the Duke of Edinburgh's or President's Award Scheme. These Awards come in three levels: Bronze (Year 10), Silver (Year 11), and Gold (Year 13). The awards are highly recognised by employers and universities alike and highly valuable in personal development.

Pupils will then undertake a series of challenging activities that will help them grow as individuals. Successful participants will gain a sense of responsibility, learn team & leadership skills, grow self-confidence, and much more.

To earn the awards, pupils must commit and complete one activity in each of the following sections: physical recreation, skills and volunteering over a set period of time. An expedition including practices is also required. Expeditions take place in the Antrim Hills, Mourne Mountains and North Antrim Coast, providing pupils the chance to explore the world around them.





Hilton Building
Templeton Building
Achieving Excellence Together



Uniform

A high standard of uniform and presentation is important to us within Integrated College Glengormley. We have invested a significant amount of time and energy into the design of our new school uniform, which has been heavily influenced by our Uniform Focus Group, made up of our pupils, whose voice has been instrumental in the design and creation of our new identity. We are delighted with the outcome and feel that our uniform is fresh and representative of our new start. We have produced a high-quality, affordable uniform and encourage all of our pupils to wear their uniform with pride and consistently strive for the highest standard of presentation each day.

All Year 8 pupils will be expected to wear the following compulsory items of our new school uniform.

Compulsory uniform:

Blazer

The Integrated College Glengormley regulation blazer is navy from the 1880 Club Everlast range. The blazer is machine washable. The blazer pocket features the gold school crest against a navy background with a teal trim on the side pockets.

The regulation blazer is worn by all pupils. **Our blazer is from the Club 1880 range, item code: 47212251/78**

Blouses/Shirts

All pupils are expected to wear a white blouse/shirt. Pupils can choose to wear short sleeve or long sleeved blouses/shirts.

Ties (Clip on only)

Year 8 - 12 Tie

Year 13 - 14 Tie

The Integrated College Glengormley regulation uniform features a school tie (Year 8 - Year 12) and a 6th form school tie (Year 13 & Year 14).

Trousers

Regulation trousers for all pupils are the mid-grey colour. **Trousers are from the Club 1880 Duratech range, item code: 72765/05.**

Skirts

Regulation skirts for all pupils are mid-grey colour, calf length box-pleat, button waist only. **Skirts are from the KK range, bespoke skirt in 26" or 28" length, item code 55226.**

School Shoes

All pupils are expected to wear black, leather, waterproof sensible shoes.

Optional Items:

School Scarf

School Jumper

We offer a navy v-neck sweater with a teal trim. This is an optional item, however it is the only jumper that pupils will be permitted to wear. School jumpers are from the Club 1880 range.

PE Kit

All PE kit items are from the Joma brand and items will additionally include the school crest, except the leggings and PE socks. All Year 8 pupils are expected to wear Joma branded PE kit.

Unisex T-shirt

Teal Joma Tshirt with the school crest

Unisex Shorts

Navy Joma shorts with a patch including the school crest

PE socks

Navy socks with a teal band

Leggings

Navy Joma leggings

Slim Leg Trousers

Navy trousers with an patch including the school crest

¼ Zip Jersey Top

Navy Joma top with an embroidered school crest

Stockist Information:

All school uniform items are to be purchased from Club 1880 stockist and KK range.

All PE kit items are to be purchased from a Joma stockist.

Our uniform suppliers are:

The Jeanery
Goland Buildings
Glencairn Park
BT36 5EN

The Sports Company
553 Antrim Road
BT15 3BU





134 Ballyclare Road, Newtownabbey, BT36 5HP



028 9083 7223



integratedcollegeglengormley.com